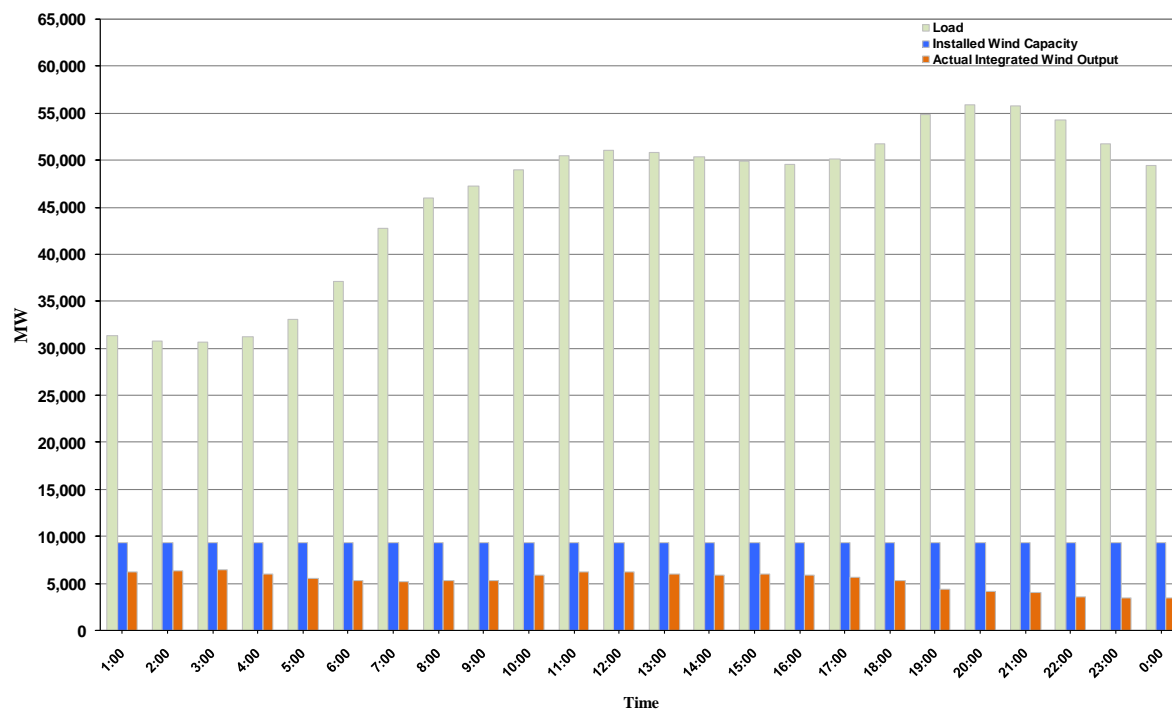




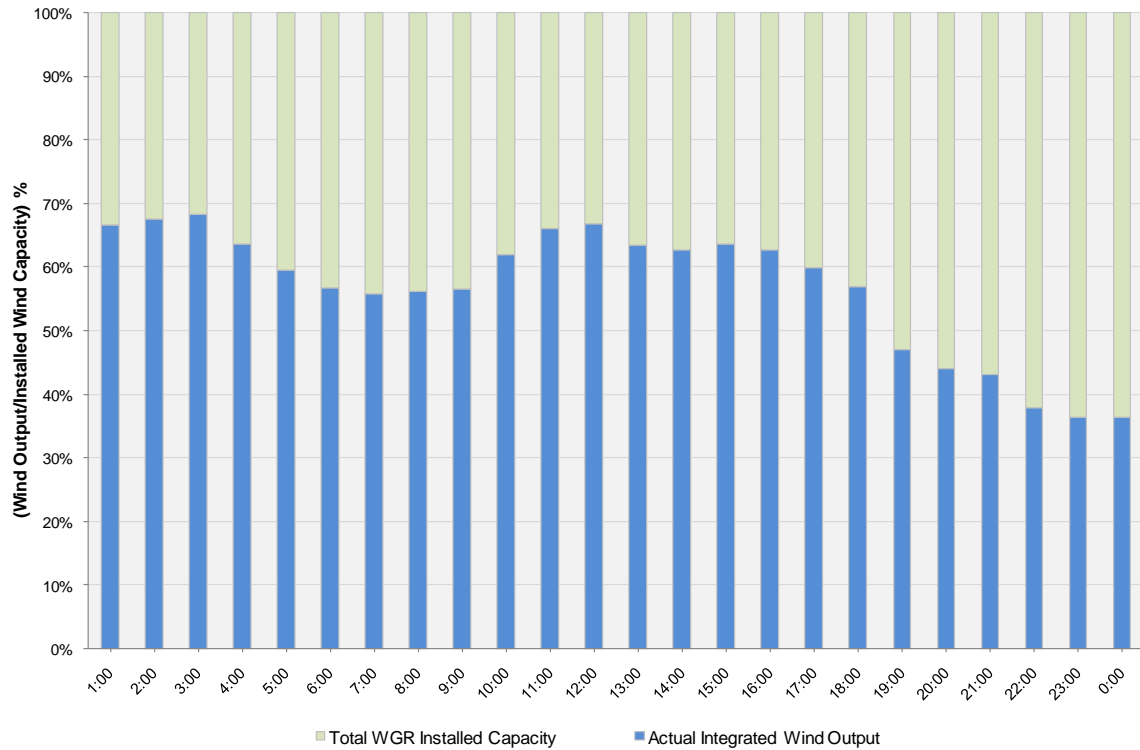
ERCOT Grid Operations Wind Integration Report: 02/09/11

| | |
|----------------------|-----------|
| Peak Load | 55,870 MW |
| Load Peak Hour | 20 |
| Wind Record 12/11/10 | 7,227 MW |
| Max Wind Value | 6,591 MW |
| Wind Peak Hour | 02:25:32 |
| Wind Integration % | 21.50 |

Hourly Average Actual Load vs. Actual Wind Output
02-09-2011



Actual Wind Output as a Percentage of the Total Installed Wind Capacity
02-09-2011



Actual Wind Output as a Percentage of the ERCOT Load
02-09-2011

